



**ORDERING INFORMATION**

To order please specify :

Type	Designation	Vibro-Meter Ordering Number
APF 196	AC-DC converter	957.07.21.2001



In this publication, a dot (.) is used as the decimal separator and thousands are separated by spaces. Example : 12 345.678 90  
 Although care has been taken to assure the accuracy of the data presented in this publication, we do not assume liability for errors or omissions.  
 We reserve the right to alter any part of this publication without prior notice.

**Head Office****Your Local Agent****Sales Offices**

**Vibro-Meter SA**  
 Rte de Moncor 4, P.O. Box,  
 CH-1701 Fribourg, Switzerland  
 Phone : +41 26 407 11 11  
 Fax : +41 26 407 13 01  
[www.vibro-meter.com](http://www.vibro-meter.com)

Sales offices in :

- Germany
- USA
- Singapore
- Russia
- France
- Canada
- United Kingdom
- Ukraine

Agents in over 30 countries  
 Vibro-Meter is a member of the  
 Meggitt Aerospace Systems Division

# 15, 30, 50 Watt AC-DC Converters

# Convert Simply 15, 30, 50

**Universal input range 85...264 V AC**  
**Single output 5.1, 12, 24 or 48 V DC**  
**Class I equipment**

- Extremely compact design
- Battery charger versions
- Operating ambient temperature range -10...50°C with convection cooling

Safety according to IEC/EN 60950



## Summary

The Convert Simply front end modules represent a family of 15, 30 and 50 watt DIN-rail mountable AC-DC converters for use as rectifiers or battery chargers. Plastic case, compact size and high reliability make the LOS, LOR, LOK 4000 series an excellent choice for space critical applications, where a DIN-Rail mountable AC-DC converter is required. The universal input range and a built-in input filter allow flexible operation in a wide variety of electronic equipment and enables world wide connection to the mains.

The units are available as rectifiers with 12 V, 24 V or 48 V

single outputs as well as battery chargers for 12 V, 24 V or 48 V batteries. The output voltage can be adjusted via the R input.

Safety approvals fully comply with world wide requirements.

### Key applications

Typical applications are: powering building controls, factory automation, industrials controls, instrumentation, electro-magnetic drives, fans and other DC loads.

## Type Survey and Key Data

Table 1: Type survey

Output		Input voltage <sup>1</sup>	Rated power $T_A = 50^\circ\text{C}$ $P_{o\ tot} [W]$	Efficiency <sup>2</sup> $\eta_{typ} [\%]$	Type	Options <sup>4</sup>
$U_{o\ nom} [V\ DC]$	$I_{o\ nom} [A]$					
5.1	5.2	85...264 V AC 47...63 Hz [88...372 V DC]	26	73	LOK 4001-2RLD	F, K
12	1.25		15	74	LOS 4301-2	
12	2.5		30	80	LOR 4301-2	
12	4		48	82	LOK 4301-2R	
12...12.8 <sup>3</sup> ...15	3.6		49	82	LOK 4140-2RLD	
24	0.65		15	76	LOS 4601-2	
24	1.25		30	82	LOR 4601-2	
24	2		48	83	LOK 4601-2R	
24...25.7 <sup>3</sup> ...30	1.8		49	83	LOK 4240-2RLD	
48	1		48	82	LOK 4801-2R	
48...51.4 <sup>3</sup> ...60	0.9		49	81	LOK 4740-2RLD	

<sup>1</sup> Linear derating to 85% of  $P_{o\ nom}$  below  $U_i = 105\ V\ AC, 110\ V\ DC$

<sup>2</sup> Efficiency at  $U_{i\ rated}$  and  $I_{o\ nom}$

<sup>3</sup> Setting voltage  $U_{o\ set}$  for battery charger with R-input left-open circuit.

<sup>4</sup> For minimum order quantities and lead times contact Power-One.

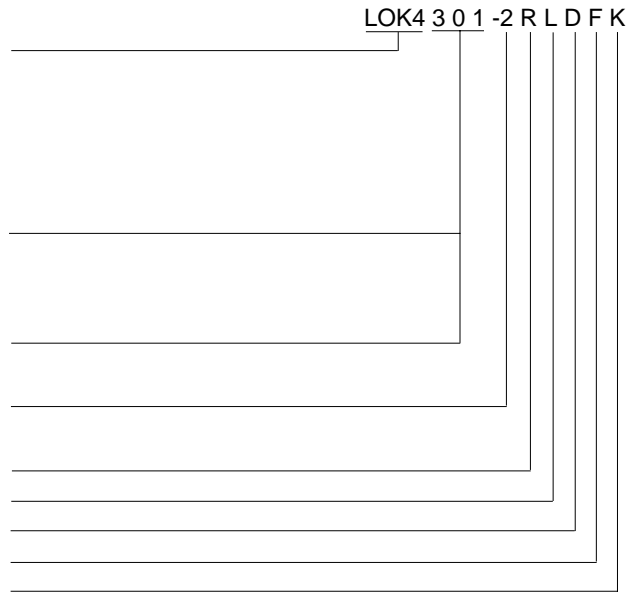
## Table of Contents

	Page		Page
Summary .....	1	Auxiliary Functions .....	4
Type Survey and Key Data .....	1	Electromagnetic Compatibility (EMC) .....	6
Type Key .....	2	Immunity to Environmental Conditions .....	7
Functional Description .....	2	Mechanical Data .....	7
Electrical Input Data .....	3	Safety and Installation Instructions .....	8
Electrical Output Data .....	3	Description of Options .....	10

**Type Key**

**Type Key**

Series	15 W .....	LOS 4
	30 W .....	LOR 4
	50 W .....	LOK 4
Output	5.1 V rectifier version .....	001
	12 V rectifier version .....	301
	24 V rectifier version .....	601
	48 V rectifier version .....	801
	12...15 V battery charger .....	140
	24...30 V battery charger .....	240
	48...60 V battery charger .....	740
	other voltages or specs. ....	02...99
Ambient temperature range $T_A$ :	-10...50°C .....	-2 <sup>3</sup>
Features and options:		
	Output voltage control input .....	R <sup>2</sup>
	Rectangular output characteristic .....	L <sup>1</sup>
	Output voltage OK signal .....	D <sup>1</sup>
	Built-in second fuse (option) .....	F
	K system connector (option) .....	K



<sup>1</sup> Battery charger version  
<sup>2</sup> LOK types  
<sup>3</sup> Up to 70 °C with derating

Examples: LOK 4140-2RLD: AC-DC converter, battery charger version, providing 12...15 V/3.6 A at the output  
 LOK 4601-2R: AC-DC converter, rectifier version, providing 24 V/2 A, 48 W at the output

**Functional Description**

The Convert Simply 15, 30 and 50 watts front end modules are fly back converters with a fixed frequency of 100 kHz (LOK) or 130 KHz (LOR, LOS). The battery charger mod-

ules and the LOK 4001-2RLD have a rectangular  $U/I$  output characteristic. The rectifier modules have over-load protection working in a hiccup mode.

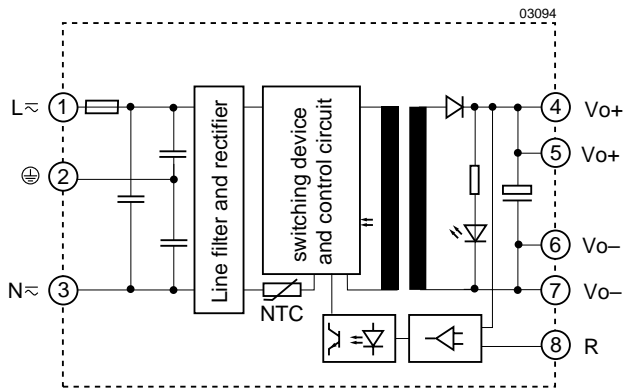


Fig. 1  
 Block diagram LOK 4301 and LOK 4601 (rectifier versions) and all LOR 4000 and LOS 4000.

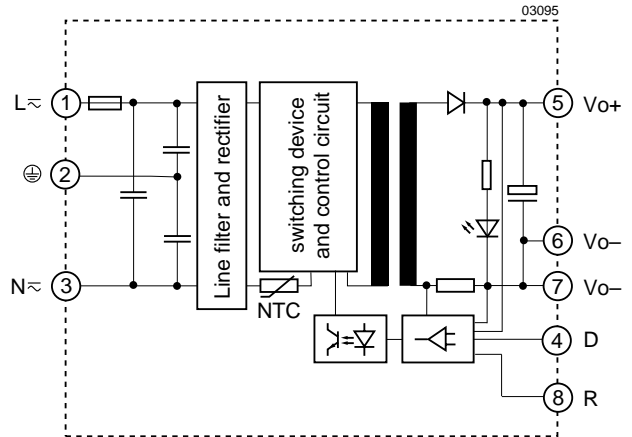


Fig. 2  
 Block diagram LOK 4140, LOK 4240 and LOK 4740 (battery charger versions) and LOK 4001- 2RLD.

## Electrical Input Data

General Condition:  $T_A = 25^\circ\text{C}$  unless otherwise specified

Table 2: Input data

Characteristics		LOS	LOR	LOK	Unit
$U_{i \text{ rated}}$	Rated input voltages	100...240	100...240	100...240	V AC
$U_{i \text{ nom}}$	Nominal input voltage	230	230	230	
$U_i$	Input voltage range	85...264	85...264	85...264	
		88...372 <sup>3</sup>	88...372 <sup>3</sup>	88...372 <sup>3</sup>	V DC
$f_i$	Line frequency	47...63	47...63	47...63	Hz
$I_i$	Input current at 115/230 V AC <sup>1</sup>	-	0.52/0.26	0.8/0.4	A
$I_{\text{Inr max}}$	Peak inrush current at $U_i = 230 \text{ V}$ <sup>2</sup>	18	18	19	

<sup>1</sup> At  $I_{o \text{ nom}}$ , <sup>2</sup> Inrush current limitation by a 16  $\Omega$  NTC resistor, <sup>3</sup> Only together with option F1 and a suitable external fuse.

## Electrical Output Data

General Conditions: –  $T_A = 25^\circ\text{C}$  unless otherwise specified. R input not connected.

Table 3a: Output data

Output			LOK 4001-2RLD			LOS/LOR/LOK 4301-2(R)			LOS/LOR/LOK 4601-2(R)			LOK 4801-2R			Unit
Characteristics		Conditions	min	typ	max	min	typ	max	min	typ	max	min	typ	max	
$U_o$	Output voltage $U_{o \text{ nom}}$	$U_{i \text{ nom}}, 0.5 I_{o \text{ nom}}$	5.1			12			24			48			V
	$U_o$ setting tolerance	R-input open-circuit	$\pm 1.5$			$\pm 1.5$			$\pm 1.5$			$\pm 1.5$			%
$U_{o \text{ adj}}$	Adjustable voltage range	Units with feature R	4.5...5.5			10.8...13.2			21.6...26.4			43.2...52.8			V
$I_{o \text{ nom}}$	Nominal output current	$U_{i \text{ min}}...U_{i \text{ max}}$	5.2			1.25 2.5 4.0			0.65 1.25 2.0			1			A
$u_o$	Output voltage noise (BW = 20 MHz)	$U_{i \text{ nom}}, I_{o \text{ nom}}$ , IEC 61200	50			100 150			100 150			200			mV <sub>pp</sub>
	Static lineload regulation	$U_{i \text{ min}}...U_{i \text{ max}}$ , $I_o = (0.1...1) I_{o \text{ nom}}$	$\pm 1$			$\pm 1$			$\pm 1$			$\pm 1$			%
$U_{o \text{ l}}$	Dynamic load regulation	$U_{i \text{ nom}}, (0.1 \leftrightarrow 0.9) I_{o \text{ nom}}$	$\pm 3$			$\pm 1.5$			$\pm 1$			$\pm 1$			
$t_r$	Transient recovery time	$I_o = (0.1 \leftrightarrow 0.9) I_{o \text{ nom}}$	$\pm 1$			$\pm 1$			$\pm 1$			$\pm 1$			ms
$t_h$	Hold-up time	115/230 V AC	14/60			14/90			14/90			14/90			
$\alpha_{U_o}$	Temper. coefficient of $U_o$	$U_{i \text{ nom}}, I_{o \text{ nom}}$	$\pm 0.058$			$\pm 0.05$			$\pm 0.05$			$\pm 0.05$			%/K
$f_s$	Switching frequency		100			100 <sup>1</sup>			100 <sup>1</sup>			100			kHz

<sup>1</sup> LOR and LOS have 130 KHz.

Table 3b: Output data

Output			LOK 4140-2RLD			LOK 4240-2RLD			LOK 4740-2RLD			Unit
Characteristics		Conditions	min	typ	max	min	typ	max	min	typ	max	
$U_o$	Output voltage	$U_{i \text{ nom}}, 0.5 I_{o \text{ nom}}$ R-input open-circuit	12.84 <sup>1</sup>			25.68 <sup>1</sup>			51.36 <sup>1</sup>			V
$U_{o \text{ adj}}$	Adjustable voltage range		12.0...15.0			24.0...30.0			48.0...60.0			
$I_{o \text{ nom}}$	Nominal output current	$U_{i \text{ min}}...U_{i \text{ max}}$	3.6			1.8			0.9			A
$u_o$	Output voltage noise (BW = 20 MHz)	$U_{i \text{ nom}}, I_{o \text{ nom}}$ , IEC 61204	100 150			100 150			200			mV <sub>pp</sub>
	Static lineload regulation	$U_{i \text{ min}}...U_{i \text{ max}}$ , $I_o = (0.1...1) I_{o \text{ nom}}$	$\pm 1$ <sup>1</sup>			$\pm 1$ <sup>1</sup>			$\pm 1$ <sup>1</sup>			%
$U_{o \text{ l}}$	Dynamic load regulation	$U_{i \text{ nom}}, (0.1 \leftrightarrow 0.9) I_{o \text{ nom}}$	$\pm 1.5$ <sup>1</sup>			$\pm 1$ <sup>1</sup>			$\pm 1$ <sup>1</sup>			
$t_r$	Transient recovery time	$I_o = (0.1 \leftrightarrow 0.9) I_{o \text{ nom}}$	1			1			1			ms
$t_h$	Hold-up time	115/230 V AC	14/90			14/90			14/90			
$\alpha_{U_o}$	Temper. coefficient of $U_o$	$U_{i \text{ nom}}, I_{o \text{ nom}}$	$\pm 0.05$ <sup>1</sup>			$\pm 0.05$ <sup>1</sup>			$\pm 0.05$ <sup>1</sup>			%/K
$f_s$	Switching frequency		100			100			100			kHz

<sup>1</sup> No temperature sensor fitted.

**Thermal Considerations**

If an AC-DC converter is located in free, quasi-stationary air (convection cooling) at the indicated maximum ambient temperature  $T_{A \max}$  (see table: *Temperature specifications*) and is operated at its nominal input voltage and output power, the temperature measured at the *Measuring point of case temperature*  $T_C$  (see *Mechanical Data, valid for LOK types*) will approach the indicated value  $T_{C \max}$  after the warm-up phase. However, the relationship between  $T_A$  and  $T_C$  depends heavily on the conditions of operation and integration into a system. The thermal conditions are influenced by input voltage, output current, airflow, temperature of surrounding components and surfaces.  $T_{A \max}$  is therefore, contrary to  $T_{C \max}$ , an indicative value only.

The relation between the maximum allowed output power  $P_{o \text{ allowed}}$  and the temperature  $T_A$  of the surrounding air is given in fig. *Maximum allowed output power vs. ambient temperature*. The rates apply if the AC-DC converter is located in free, quasi-stationary air (convection cooling).

**Note:** Sufficient forced cooling allows  $T_A$  to be higher than the value given in the table if  $T_{C \max}$  according to the table is not exceeded.

**Caution:** The installer must ensure that under all operating conditions  $T_C$  remains within the limits stated in the table *Temperature specifications*.

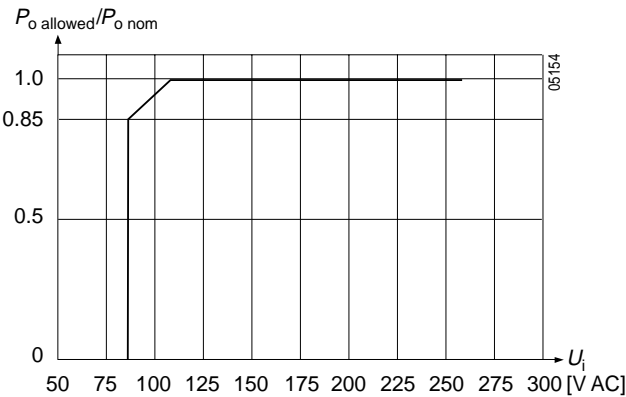


Fig. 3  
Maximum allowed output power versus input voltage at  $T_A$  50°C. for LOK units.

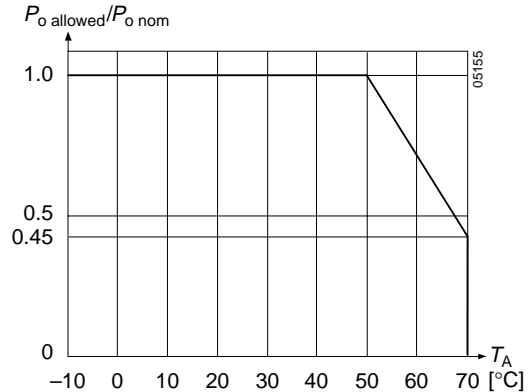


Fig. 4  
Maximum allowed output power versus ambient temperature at  $U_i > 105$  V for LOK units.

**Auxiliary Functions**

**Adjustable Output Voltage (R input)**

As a standard feature, the LOK units offer adjustable output voltage by using the control input R. If the R pin is left open-circuit, the output voltage is set to  $U_{o \text{ nom}}$ . (see: *Output data*)

The R input is referenced to the secondary side of the converter. Adjustment of the output voltage is possible by means of either an external resistor or a voltage source.

a) Adjustment by means of an external resistor  $R_{\text{ext}1}$ :

Depending upon the value of the required output voltage, the resistor shall be connected

**either:** Between the R terminal and  $V_{o-}$  to achieve an output voltage adjustment range of approximately  $U_o = 90 \dots 100\% U_{o \text{ nom}}$ . (LOK 4301, 4601 and 4801 types)

$$R_{\text{ext}1} \approx 4 \text{ k}\Omega \cdot \frac{U_o}{U_{o \text{ nom}} - U_o}$$

**or:** Between the R terminal and  $V_{o+}$  to achieve an output voltage range of approximately  $U_o = 100 \dots 110\% U_{o \text{ nom}}$  for rectifier versions and  $100 \dots 125\% U_{o \text{ nom}}$  for battery chargers.

$$R_{\text{ext}2} \approx 4 \text{ k}\Omega \cdot \frac{(U_o - 2.5 \text{ V})}{2.5 \text{ V} \cdot (U_o / U_{o \text{ nom}} - 1)}$$

b) Adjustment by means of an external voltage  $U_{\text{ext}}$  between  $V_{o-}$  and R terminal to achieve an output voltage adjustment range of approx.  $90 \dots 110\% U_{o \text{ nom}}$  (LOK 4301, 4601 and 4801 types),  $93 \dots 117\% U_{o \text{ nom}}$  for battery chargers.

$$U_{\text{ext}} \approx \frac{U_o \cdot 2.5 \text{ V}}{U_{o \text{ nom}}}$$

Attempting to adjust the output below this range will cause the converter to shutdown (hiccup mode).

**Note:** Applying an external control voltage  $> 3$  V may damage the converter.

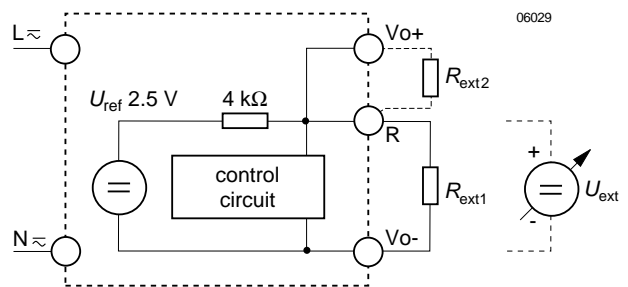


Fig. 5  
Output voltage control for single output units by means of the R-input

**Output Overload Protection**

Battery charger versions LOK4140-, 4240- and LOK4740-2RLD and the LOK 4001-2RLD have a rectangular current limitation, which limits the output current to within  $(1...1.3) \cdot I_{o\ nom}$ . The other types are protected against overload by a current limiting device, which shuts down the converter in overload condition. It automatically restarts after removal of the overload condition (hiccup mode).

**Outputs Connected in Series**

Two or more units supplying the same or different output voltages may be connected in series. The value of the maximum output current to be taken is defined by that unit providing the lowest current limiting value. It should be assured that the outputs do not feed backwards into each other caused by their different rise/fall times at switch-on/off cycles by adding reverse polarity diodes across each output.

**Parallel Operation**

Only possible with battery charger versions. The outputs of several units of the battery charger types with equal output voltage (e.g. several LOK 4240-2RLD) can be connected in parallel.

**Battery Charging/Temperature Sensor**

The LOK 4140/4240/4740 are intended for sealed lead acid battery charger applications. For optimum battery charging and extended life time of the battery an external temperature sensor may be connected to the R-input. The sensor should be mounted as close as possible to one of the poles of the battery.

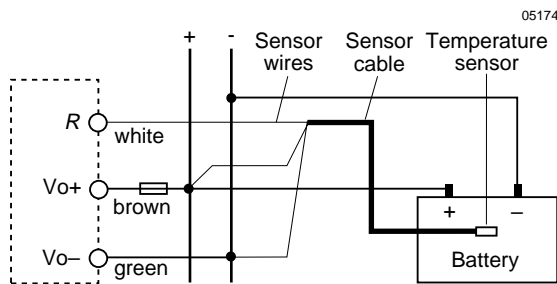


Fig. 6 Voltage setting by a temperature sensor, wiring diagram

Table 4: Output voltage OK signal

Conditions	LOK 4001-2RLD		LOK 4140-2RLD		LOK 4240-2RLD		LOK 4740-2RLD		Unit
	min	max	min	max	min	max	min	max	
$U_{o\ t}$ setting	4.4	4.8	10.5	11.5	21	23	42	46	V
$U_D$	$U_o \leq U_{o\ t\ min}$	60		60		60		60	
	$U_o > U_{o\ t\ max}$ $I_D < 50\ mA$		0.6		0.6		0.6		0.6

Depending upon the cell voltage and the temperature coefficient of the battery, different temperature sensors are available. If no sensor is used, the float charge voltage should be adjusted with a suitable resistor. (see: *Adjustable Output voltage*)

For more information please contact Power-One.

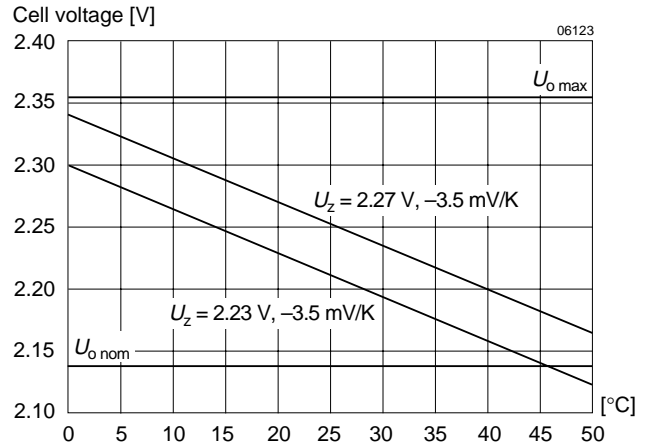


Fig. 7 Float charge voltage vs. temperature for defined temperature coefficient.

**Feature D Output Voltage OK Signal**

The D-output is referenced to  $V_{o-}$  and monitors the output voltage  $U_o$ . If  $U_o$  drops below  $U_{o\ t}$ , the D-output will be disabled (open-collector circuit). The circuitry works independently of the input voltage and can therefore be used as battery-low indicator.

## Electromagnetic Compatibility (EMC)

### Immunity

A metal oxide VDR together with the input fuse and the input filter form an effective protection against high input transient voltages, which typically occur in most installations. The LOS / LOR 4000 and LOK 4000 family have been successfully tested to the following specifications:

Table 5: Immunity type tests

Phenomenon	Standard <sup>1</sup>	Level	Coupling mode <sup>2</sup>	Value applied	Waveform	Source imped.	Test procedure	Per-form. <sup>3</sup>
Electrostatic discharge	IEC/EN 61000-4-2	2	air discharge	8000 V <sub>p</sub>	1/50 ns	330 Ω	10 positive and 10 negative discharges	B
Electromagnetic field	IEC/EN 61000-4-3	2	antenna	3 V/m	AM 80% 1 kHz	n.a.	80...1000 MHz 900 MHz 1800 MHz	B
Electrical fast transient/burst	IEC/EN 61000-4-4	3	direct, i/⊕, +i/-i	1 kV <sub>p</sub>	bursts of 5/50 ns 2.5/5 kHz over 15 ms; burst period: 300 ms	50 Ω	1 min positive 1 min negative transients per coupling mode	B
Surge	IEC/EN 61000-4-5	3	i/⊕	2 kV <sub>p</sub>	1.2/50 μs	12 Ω	5 pos. and 5 neg. surges per	A
		2	+i/-i	1 kV <sub>p</sub>		2 Ω		
Conducted disturbances	IEC / EN 61000-4-6	A	box	3 V <sub>rms</sub>	AM 80% 1 kHz	150 Ω	0.15...80 MHz	A

<sup>1</sup> Related and previous standards are referenced in: *Technical Information: Standards*

<sup>2</sup> i = input, o = output, c = case.

<sup>3</sup> A = Normal operation, no deviation from specifications, B = Normal operation, temporary deviation from specs possible.

### Emission

Internal input filtering keeps the conducted noise of the units within the frequency range of 10 kHz to 30 MHz below level B according to EN 55011 and EN 55022 standards (CISPR 11/22 respectively).

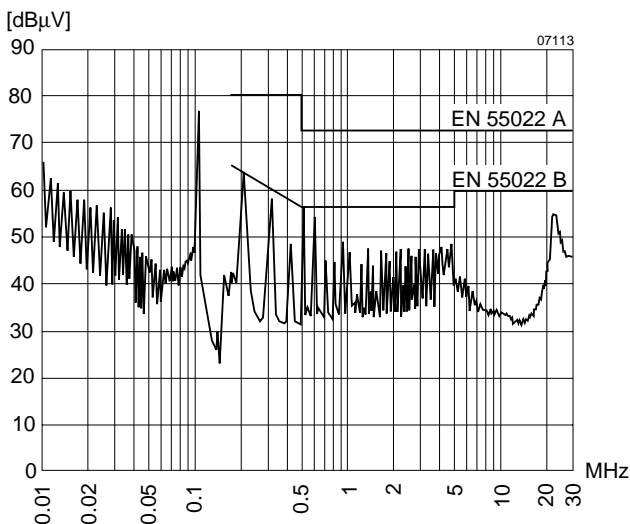


Fig. 8

Typical disturbance voltage (quasi-peak) at the input according to CISPR 11/22 and EN 55011/22, measured at  $U_{1\text{nom}}$  and  $I_{0\text{nom}}$ . LOK 4601-2R,  $U_1 = 230\text{ V AC}$ .

### Immunity to Environmental Conditions

Table 6: Mechanical stress

Test Method		Standard	Test Conditions		Status
Ca	Damp heat steady state	IEC/DIN IEC 60068-2-3 MIL-STD-810D section 507.2	Temperature: Relative humidity: Duration:	40 ±2 °C 93 +2/-3 % 21 days	Unit not operating
Ea	Shock (half-sinusoidal)	IEC/EN/DIN EN 60068-2-27 MIL-STD-810D section 516.3	Acceleration amplitude: Bump duration: Number of bumps:	15 g <sub>n</sub> = 147 m/s <sup>2</sup> 11 ms 18 (3 each direction)	Unit operating
Eb	Bump (half-sinusoidal)	IEC/EN/DIN EN 60068-2-29 MIL-STD-810D section 516.3	Acceleration amplitude: Bump duration: Number of bumps:	10 g <sub>n</sub> = 98 m/s <sup>2</sup> 11 ms 6000 (1000 each direction)	Unit operating
Fc	Vibration (sinusoidal)	IEC/EN/DIN EN 60068-2-6 MIL-STD-810D section 514.3	Acceleration amplitude: Frequency (1 Oct/min): Test duration:	0.15 mm (10...60 Hz) 2 g <sub>n</sub> = 20 m/s <sup>2</sup> (60...150 Hz) 10...150 Hz 3.75 h (1.25 h each axis)	Unit operating

Table 7: Temperature specifications

Characterisitcs		Conditions	min	max	Unit
T <sub>A</sub>	Ambient temperature	Operational <sup>1</sup>	-10	50	°C
T <sub>C</sub>	Case temperature				
T <sub>S</sub>	Storage temperature	Non operational	-40	85	

<sup>1</sup> See: Thermal Consideration.

Table 8: MTBF Values

MTBF	Type	Ground benign	Ground fixed		Ground mobile	Unit
		T <sub>C</sub> = 40°C	T <sub>C</sub> = 40°C	T <sub>C</sub> = 70°C	T <sub>C</sub> = 50°C	
According to MIL-HDBK-217F, notice 2	LOK	1'600'000	400'000	200'000	120'000	h

### Mechanical Data

Dimensions in mm. Tolerance ±0.3 mm unless otherwise indicated.

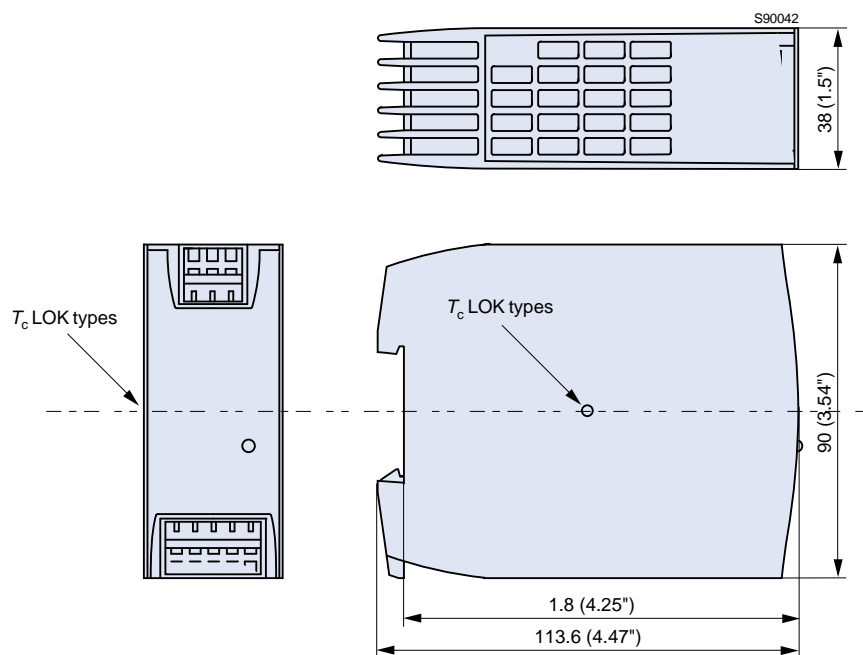


Fig. 9

## Safety and Installation Instructions

### Terminal Allocation

The terminal allocation table defines the electrical potentials of the AC-DC converters. For mechanical positions of the terminals see: *Mechanical Data*.

Table 9: Terminal allocation

Terminal	Electrical	LOR/LOS	LOK
1	Input	L $\approx$	L $\approx$
2	Protective earth	$\oplus$	$\oplus$
3	Input	N $\approx$	N $\approx$
4	Output (positive)/D	Vo+	Vo+/D
5	Output (positive)	Vo+	Vo+
6	Output (negative)	Vo-	Vo-
7	Output (negative)	Vo-	Vo-
8	n.c./R input	n.c.	R

### Standards and Approvals

LOR/LOK AC-DC converters correspond to class I equipment. All types are UL recognized according to UL 1950, UL recognized for Canada to CAN/CSA C22.2 No. 950-95 and LGA approved to IEC/EN 60950 standards.

The units have been evaluated for:

- Building in
- Double or reinforced insulation or an earthed part between input and output.
- Basic insulation between input and earth
- Operational insulation between output and earth
- The use in a pollution degree 2 environment
- Connecting the input to a primary circuit with overvoltage category II.

The AC-DC converters are subject to manufacturing surveillance in accordance with the above mentioned UL, CSA, EN and with ISO 9001 standards.

### Protection Degree

IP 20: All units.

### Installation Instructions

These converters are components, intended exclusively for inclusion within other equipment by an industrial assembly operation or by professional installers. Installation must strictly follow the national safety regulations in compliance with the enclosure, mounting, creepage, clearance, casu-

ality, markings and segregation requirements of the end-use application. See also *Technical Information: Installation and Application*.

Connection to the system shall be according to *Terminal allocation* and *Mechanical Data*. Check for hazardous voltages before altering any connections.

Ensure that a unit failure (e.g. by an internal short-circuit) does not result in a hazardous condition. See also *Safety of operator accessible output circuit*.

The phase input (L $\approx$ ) is internally fused by a 1.6 A slowblow type. It is not customer-accessible. This fuse is designed to protect the unit in case of overcurrent. Option F or external fuses in the wiring to one or both input pins (L $\approx$  and/or N $\approx$ ) may therefore be necessary to ensure compliance with local requirements.

In applications where the converters operate at source voltages above 250 V DC an external fuse or a circuit breaker at system level should be installed.

A second fuse in the wiring to the terminal N $\approx$  is needed if:

- Local requirements demand an individual fuse in each source line
- Neutral and earth impedance is high or undefined
- Phase and neutral of the mains are not defined or cannot be assigned to the corresponding terminals (L $\approx$  to phase and N $\approx$  to neutral).

**Important:** Do not open the modules, or guarantee will be invalidated.

Make sure that there is sufficient air flow available for convection cooling. This should be verified by measuring the case temperature when the unit is installed and operated in the end-use application. The maximum specified case temperature  $T_{C\ max}$  shall not be exceeded. See also *Thermal Considerations*.

### Insulation

The electric strength test is performed as a factory test in accordance with IEC/EN 60950 and UL 1950 and should not be repeated in the field. Power-One will not honour any guarantee/warranty claims resulting from electric strength field tests.

**Important:** Testing by applying AC voltages will result in high and dangerous leakage currents flowing through the Y-capacitors (see fig. *Block diagram*)

Table 10: Isolation

Characteristic		Input to protective earth	Input to output	Output to protective earth	Unit
Electric strength test voltage	Actual factory test 1 s	2.1	4.3 <sup>1</sup>	1.4	kV DC
	AC test voltage equivalent to actual factory test	1.5	3.0 <sup>1</sup>	1.0	kV <sub>rms</sub>
Insulation resistance at 500 V DC		>300	>300	>300	M $\Omega$

<sup>1</sup> In accordance with IEC/EN 60950 only subassemblies are tested in factory with this voltage. For creepage distances and clearances refer to *Technical Information: Safety*.

**Leakage Currents in AC-DC Operation**

Leakage currents flow due to internal leakage capacitance and RFI suppression Y-capacitors. The current values are proportional to the mains voltage and nearly proportional to the mains frequency and are specified at an input voltage of 264 V (50 Hz) where phase, neutral and protective earth are correctly connected as required for class I equipment.

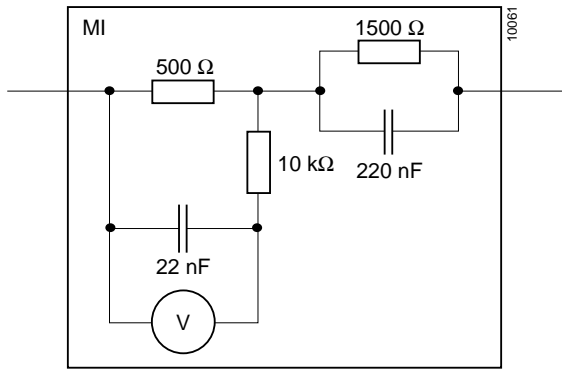


Fig. 10  
Measuring instrument (MI) for earth leakage current tests according to IEC/EN 60950.

Under test conditions the leakage current flows through a measuring instrument (MI) as described in fig. *Measuring instrument for earth leakage current tests*, which takes into account impedance and sensitivity of a person touching accessible parts. The current value is calculated by dividing the measured voltage by 500 Ω. If inputs and/or outputs of LOS, LOR or LOK 4000-units are connected in parallel, their individual leakage currents are added.

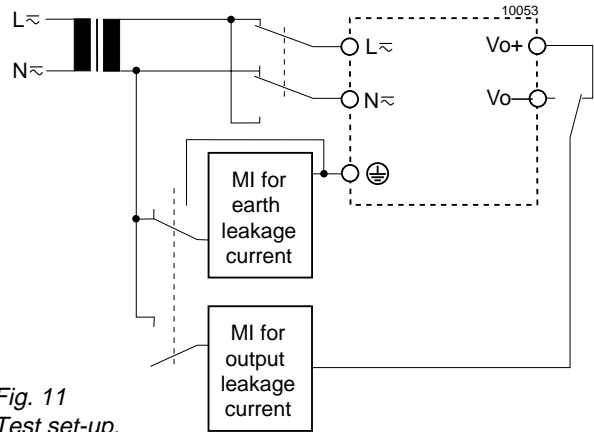


Fig. 11  
Test set-up.

Table 11: Leakage currents

Characteristic		LOK	Unit
Maximum earth leakage current	Permissible according to IEC/EN 60950	3.5	mA
	Specified value at 264 V, 50 Hz	1.0	
Maximum output leakage current	Permissible according to IEC/EN 60950	0.25	
	Specified value at 264 V, 50 Hz	0.035	

**Safety of Operator Accessible Output Circuit**

If the output circuit of an AC-DC converter is operator accessible, it shall be an SELV circuit according to the IEC/EN 60950 related safety standards.

The following table shows a possible installation configuration, compliance with which causes the output circuit of an LOS, LOR or LOK 4000-family AC-DC converter to be an SELV circuit according to IEC/EN 60950 up to a configured output voltage (sum of nominal voltages if in series or +/- configuration) of 36 V.

However, it is the sole responsibility of the installer to assure the compliance with the relevant and applicable safety regulations. More information is given in *Technical Information: Safety*.

Table 12 : Safety concept leading to an SELV output circuit

Conditions	AC-DC converter	Installation	Result
Nominal Supply voltage	Grade of insulation between input and output, provided by the AC-DC converter	Measures to achieve the resulting safety status of the output circuit	Safety status of the AC-DC converter output circuit
Mains $\leq 250$ V AC	Double or reinforced	Earth connection <sup>1</sup> and installation according to the applicable standards	SELV circuit

<sup>1</sup> The earth connection of terminal no. 2 has to be provided by the installer according to the relevant safety standards, e.g. IEC/EN 60950

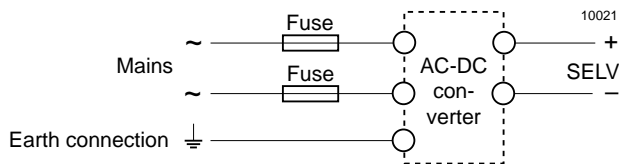


Fig. 12

Schematic safety concept.

Use fuses and earth connection as per *Installation*

*Instructions* and table *Safety concept leading to an SELV output circuit*.

## Description of Options

Table 13: Survey of options

Option	Function of option
F	Built-in second fuse
K	System connectors

### Option F

#### Built-in second fuse

A built-in second fuse in the neutral input line enables safe connection to the mains where phase and neutral are not defined or cannot be identified as e.g. in the case of plug and socket connection to the mains via Schuko-plugs, see also *Installation Instruction*.

### Option K

#### System connectors

For installation into systems using preassembled harnesses the units are available with connectors fitted with screw terminals. The system connectors are UL-listed and approved for currents up to 10 A. Wire cross sections: Solid wires 1.5 mm<sup>2</sup>, stranded wires 1 mm<sup>2</sup>.