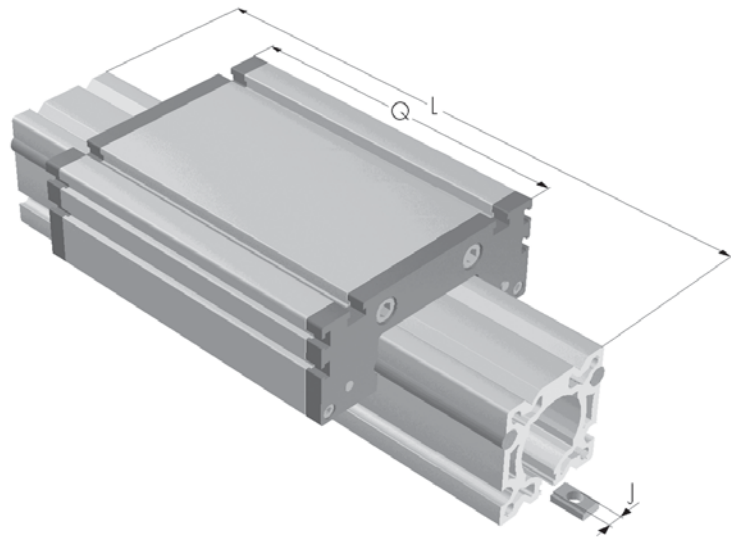
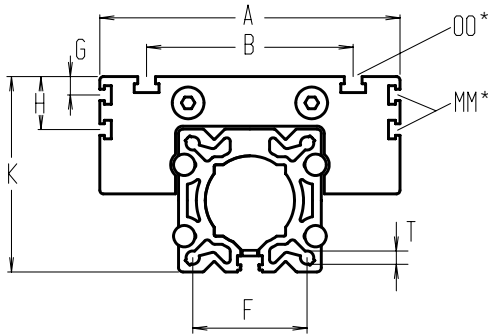


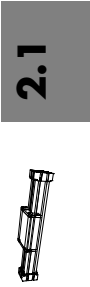
Positioning system ER 30, 40, 60, 80, 80S, 100, 125

Dimensions (mm)

Roller guide unit without drive



Increasing the carriage length will increase the basic length by the same amount.



*For slide-nuts refer to chapter 2.2 page 2

Size □	Basic length L	A	B	F	G	H	J	K	MM for	OO for	Q	T	Basic weight	Weight per 100 mm
ER 30	82	70	56	23	-	-	M 6	41	-	M 6	82	M 4	0,5 kg	0,12 kg
ER 40	125	100	66	29	-	-	M 6 - M10	55	-	M 6	122	M 5	0,7 kg	0,23 kg
ER 60	170	144	96	48	-	-	M 6 - M10	79	-	M 8	168	M 6	2,4 kg	0,61 kg
ER 80	200	170	117	64	10	30	M 6 - M10	110	M 6	M 10	194	M 8	3,7 kg	0,90 kg
ER 80S	220	190	126	64	12,5	30	M 6 - M10	111	M 6	M 8	214	M 8	4,7 kg	0,90 kg
ER 100	300	230	155	80	-	29	M 10	139	M 10	M 10	300	M 10	10,8 kg	1,50 kg
ER 125	365	295	200	100	-	30	M 12	170	M 10	M 12	365	M 12	20,3 kg	2,05 kg

Choice of guide body profile:

0 (0) Standard **(1)** stainless guide rods **(2)** stainless guide rods and screws **(3)** stainless guide rods, rollers and screws

Choice of carriages:

0 (0)



For standard carriage length see 'Q' in table. The carriages can be delivered in any non-standard length on request; the longer the carriage, the greater the load capacity.

(1)



Top and bottom carriages are rigidly joined, thus enabling higher loads to be applied. This increases the basic length by 12-24 mm. Thickness of jointing plate refer to chapter 1.2 page 6.

Application:

This unit can be used as a load-carrying linear slide, or it may be fitted with a suitable pneumatic drive.

1500 Basic length + stroke = total length

ER 40 0 0 0 0 0 0 0 0 01500
Pos. 1 2 3 4 5 6 7

For combination kits and connecting elements refer to chapter 2.2

Sample ordering code:

ER 40, Non driven system, standard body profile, standard carriage, 1375 mm stroke

