

NB

INCH MINIATURE SLIDE BUSH



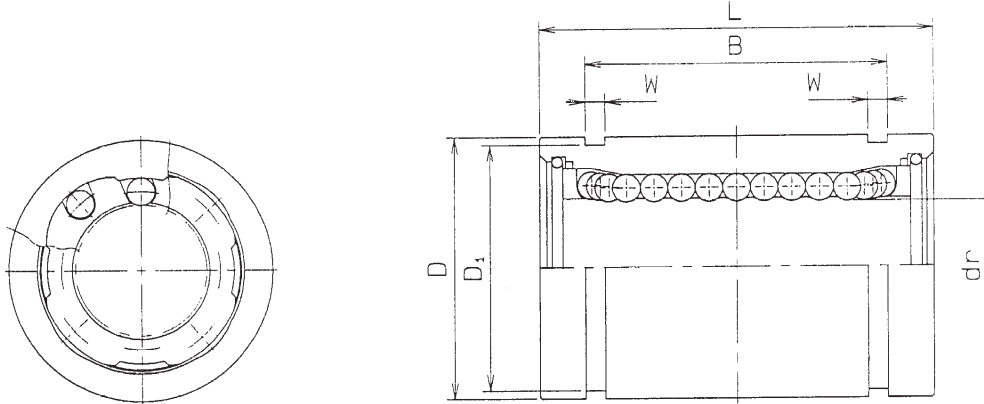
**NIPPON
BEARING CO., LTD.**

NB

Corporation of America

October 15th, 1999

Specifications for Inch Miniature Slide Bush



Nominal Shaft Diameter Inch / mm	Part Number	Ball Circuit	Weight g	dr Tol. + 0 - 0.00035	D		L Tol. + 0 - 0.008	B Tol. + 0 - 0.008	W	D1	Eccentricity	Radial Clearance	Basic Load Rating	
					Inch / mm	Tol.							dynamic C N	static Co N
0.1250" 3.175 mm	SWS 2G	4	2.8	0.1250 3.175mm	0.3125 7.938mm	+ 0 - 0.00040	0.500 12.700mm	0.3681 9.35mm	0.0280 .71mm	0.2902 7.37mm	0.0003"	-0.00008"	59	76
0.1875" 4.763 mm	SWS 3G	4	3.6	0.1875 4.763mm	0.3750 9.525mm	+ 0 - 0.00040	0.562 14.275mm	0.4311 10.95mm	0.0280 .71mm	0.3520 8.94mm	0.0003"	-0.00010"	91	110
0.2500" 6.35 mm	SWS 4G	4	9.5	0.2500 6.350mm	0.5000 12.700mm	+ 0 - 0.00045	0.750 19.050mm	0.5110 12.98mm	0.0391 .992mm	0.4687 11.906mm	0.0003"	-0.00010"	206	265



NB INCH MINIATURE SLIDE BUSH

Introduction

Exceptional Precision with Optimum Quality

NB's newest addition to the **SLIDE BUSH** family may be small but the **INCH Miniature SLIDE BUSH** provides tremendous advantages. The sizes just added are the most popular dimensions of 1/8", 3/16" and 1/4". Metric sizes of 3, 4 and 5mm are also available.

Applications ranging from instruments to computers, **NB's** newest performer provides exceptional precision and highly

accurate linear movement. We are confident that these new products will meet if not exceed your expectations, even for the most extremely sensitive requirements.

The **INCH Miniature SLIDE BUSH** is manufactured from corrosion resistant materials. Dimensionally replaces other manufacturers like sizes without redesign.

Structure and Features

The **NB SLIDE BUSH** consists of an outer cylinder, ball retainer, balls, and two end rings. The ball retainer which holds the balls in the recirculating tracks are held inside the outer cylinder by the end rings. These parts are assembled to optimize their required functions.

The outer cylinder is hardened to ensure projected travel life and satisfactory durability. A wide range of sizes and styles are available from the **SLIDE BUSH** family to meet any service application.

1. High Precision and Smooth Movement

The **NB Miniature SLIDE BUSH** is produced to provided the most reliable precision linear movement ever experienced. **NB's** Linear Slide Shaft will provide for the optimum linear surface.

2. Ease of Assembly

The standard type of **NB SLIDE BUSH** may be loaded from any direction. Precision control is possible utilizing **NB's** mounting accessories.

3. Ease of Replacement

NB's Miniature SLIDE BUSH is made to standardized dimensions allowing for easy replacement of other manufacturer's product.

4. Anti-Corrosive

The **NB Miniature SLIDE BUSH** is produced from corrosion resistant materials. The **SLIDE BUSH** incorporates a seamless resin ball retainer and Stainless Steel balls.

5. Variety of Types

NB offers a full line of **SLIDE BUSH** product such as: Standard, Clearance Adjustable, and Open Types; Standard or High Load; Fixed or Self-Alignment; Single or Double-Wide; and Flange Type styles are offered in Inch, European-Metric standard, and Asian-Metric standard sizes.

Contact your **NB** sales representative for further information on the full range of Linear Slide Products available from **NB**.