

Lubrication Remote Monitor LRM2

Monitors lubrication systems in difficult-to-access locations and provides communication between user and lubrication pump



LRM2 provides confidence that your equipment is being lubricated

SKF's LRM2 lubrication remote monitor is designed for use with lubrication systems that cannot be checked daily due to the nature or position of the specific application. Compatible with oil or grease, the monitor can be used on single-line, dual-line and progressive lubrication systems. The LRM2 can communicate with a pump or group of pumps on the same type of lubrication system.

LRM utilizes a SIM card similar to those found in cell phones and tablets to send and receive text messages via iOS or android mobile devices or via e-mail to a computer. The monitoring system can transmit alert messages to a random number of e-mail or mobile phone contacts. These contacts can be grouped based on the message type.

The LRM2 features two digital inputs and outputs and sends both low-level and fault messages. Also, the monitor can be used to start an additional lubrication cycle and can be reset by sending messages from the mobile device.

In addition, you can access system information by using your web browser without having to install special software.

The LRM is suitable for wind energy, railroad wayside, cable car and wastewater treatment applications, as well as other industries.

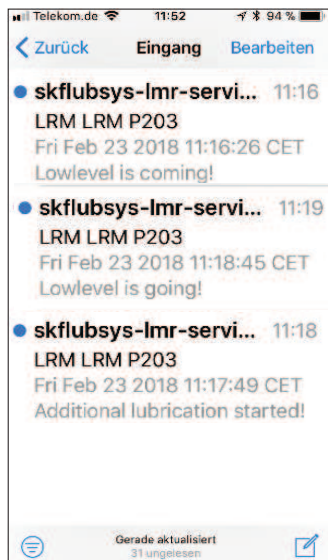
Features:

- Can be used on single-line, dual-line and progressive lubrication systems
- Two digital inputs and outputs
- Antenna is packed inside housing; optional external antenna can be ordered
- LRM2 module is available without housing for mounting in existing control box

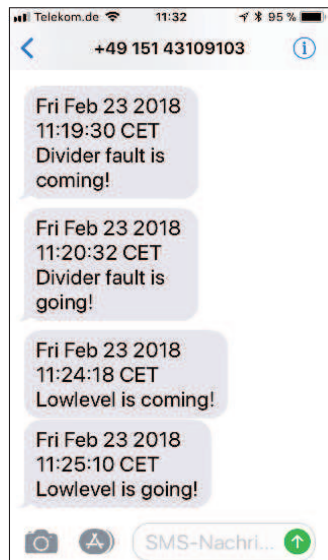
Advantages:

- Remote monitoring of lubrication systems
- Receives low-level and fault signals
- Can reset or restart lubrication system remotely
- Transmits alert messages to e-mails or mobile phone contacts
- No software installation required; utilizes web browser for system set-up
- Monitors up to three pumps on the same type of lubrication system
- Saves money by reducing need for onsite system checks

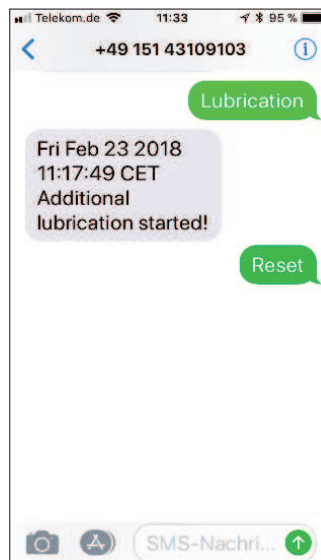
Message examples for a lubrication system with P203 pump



Example of e-mail messages and command



Example of SMS alerts



Example of SMS commands and confirmation message

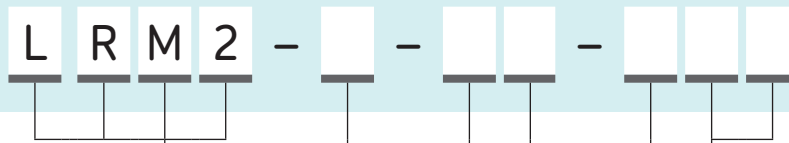
Alert messages (input):

- Fault messages
- Low-level messages
- Successful lubrication (confirmation message)

Commands (output)

- Additional lubrication cycle
- Reset the LRM unit

Order code



Lubrication Remote Monitor 2

Country Code

E = Europe and Asia (no UL/CSA/FCC)

Pump / Product family

- 0 = P203, P603, P653 (without coupling relays)
- 1 = KFG (with coupling relays and always in enclosure) (2 coupling relays)
- 2 = If 2 AC pumps are switched to one LRM (4 coupling relays)
- 3 = If 3 AC pumps are switched to one LRM (6 coupling relays)

Programming

- 1 = Joint empty signal and fault signal (on KFG or P-series)
- 2 = Separate empty signal and fault signal (only on P-series, not with KFG pumps)

Enclosure

- 1 = with enclosure
- 2 = base unit only, without enclosure, no antenna

Options

0 = without

Order example

LRM2-E-00-100

- Lubrication Remote Monitor 2
- For use in Europe and Asia
- Pump versions P203, P603, P653
- Low-level and fault signal separately
- With enclosure
- Without options

Technical data

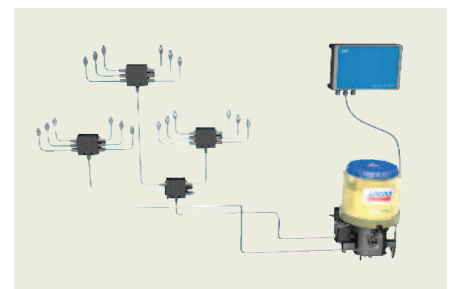
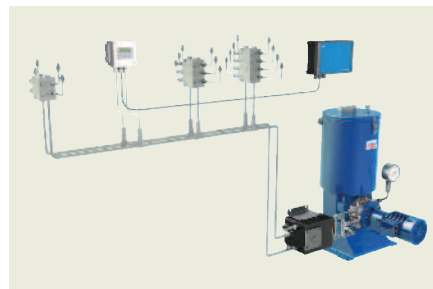
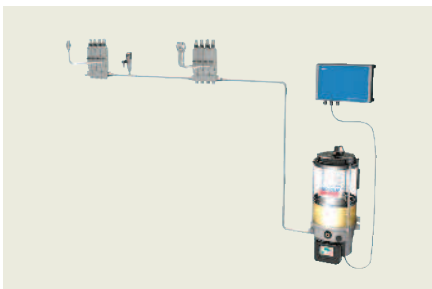
Operating temperature	-30 to +70 °C
Storage temperature	-40 to +70 °C
Air humidity	0-95%
Protection class	IP 66
Screwed cable gland	M16
Clamping zone of cable strand	(\varnothing) 4-10 mm
LRM2 clamping zone	0,25-2,5 mm
Power supply	12-24 V DC (\mp 20%)
Power consumption	max. 3 W
Mounting position	any
Min. installation space	420x220x350 mm
Dimensions	
LRM2 without enclosure	150x90x61 mm
Enclosure	271x171x262 mm

Accessories and spare parts

Part number

2G/3G Magnetic base antenna (3 m length) **236-11335-8**

For more fittings and accessories see publication
→ **PUB LS/P2 15859 EN · 1-0103-EN**



For use on single-line, dual-line and progressive lubrication systems



skf.com | skf.com/lubrication | skf.com/LRM2

© SKF is a registered trademark of the SKF Group.

© SKF Group 2018

The contents of this publication are the copyright of the publisher and may not be reproduced (even extracts) unless prior written permission is granted. Every care has been taken to ensure the accuracy of the information contained in this publication but no liability can be accepted for any loss or damage whether direct, indirect or consequential arising out of the use of the information contained herein.

PUB LS/P2.17887 EN · April 2018

Certain image(s) used under license from Shutterstock.com.
This publication supercedes publication PUB LS/P2.14940 EN · 1-0364.